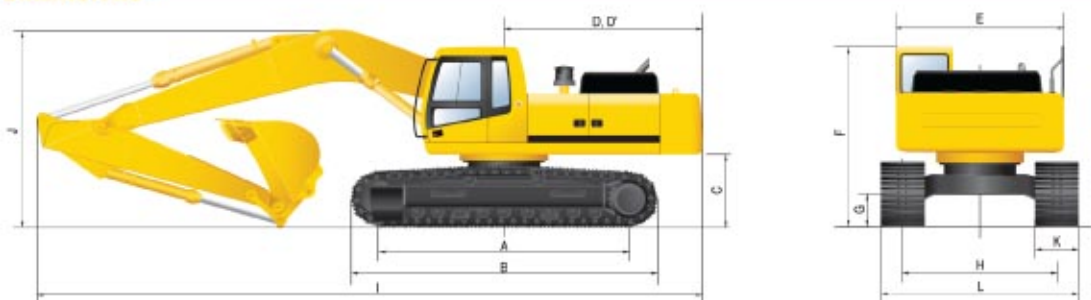


**CONTROL** Pilot pressure operated joysticks and pedals with detachable lever provide almost effortless and fatigueless operation.

Pilot control	Two joysticks with one safety lever (LH): Swing and arm, (RH): Boom and bucket (ISO)
Travelling and steering	Two levers with pedals
Engine throttle	Electrical, Cable type
Lights	Two lights mounted on the boom and one below the cab

## DIMENSIONS



	mm
I Overall length	12000
J Overall height of boom	3600
K Track shoe width	600
L Overall width	3340
D,D Tail swing	3720

## SPECIFICATIONS

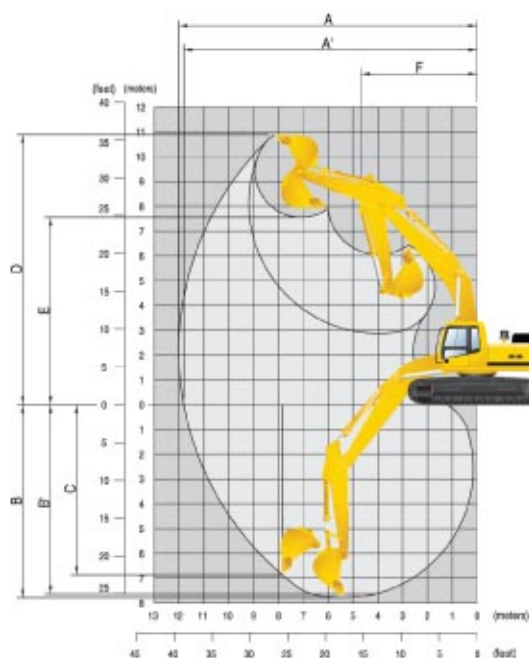
Diesel engine	Water-cooled
Model	Cummins QSM11-C
Fuel tank capacity	610 litres
Hydraulic tank	250 litres
Fuel consumption rate (av. 75-85% full capacity)	26-29 litres/hour

### PERFORMANCE

Gradeability	35° / 70%
Bucket Digging Force	26.1 tonne
Operating weight	44 900 kg
Ground Pressure	11.09 PSI

## BUCKET ATTACHMENTS

Quick hitch	Yes
Hitch pick up	400 mm
Mud	2000 mm
General purpose	1600 mm
Ripper	Yes
Batter	2000 mm



## WORKING RANGES

	mm
Boom length	7060
Arm length	3380
A Max. digging reach	12100
A' Max. digging reach on ground	11900
B Max. digging depth	7790
C Max. vertical wall digging depth	6560
D Max. digging height	11030
E Max. dumping height	7660
F Min. swing radius	4780

# SHERRIN Rentals

BRISBANE • DARWIN • TOOWOOMBA • SUNSHINE COAST

## 132 138

Email - [info@sherrinrentals.com.au](mailto:info@sherrinrentals.com.au) Web - [www.sherrinrentals.com.au](http://www.sherrinrentals.com.au)

# 45 Tonne Excavator